



 Port of
Lewiston

Idaho's Seaport

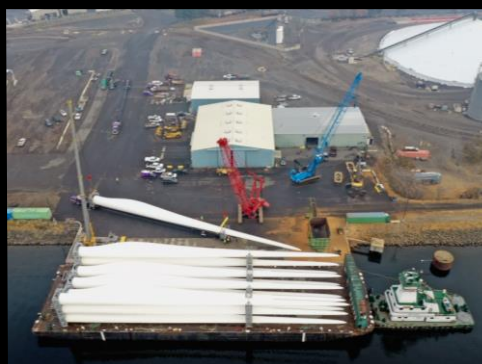
**BROADBAND MANAGER/
OPERATIONS MANAGER**

\$90,000 - \$110,000

Plus Excellent Benefits

Apply by
August 7, 2022
(First Review, Open Until Filled)

 **PROTHMAN**



LEWISTON, IDAHO



Situated at the confluence of the Snake and Clearwater rivers, Lewiston is marked by unparalleled natural beauty and outdoor recreational activities enjoyed by the city's 33,000 residents. The Lewis-

Clark Valley served as an encampment on the famous Lewis and Clark Expedition in 1805, as well as the duo's return trip the following year. As a result, Lewiston, the eventual Nez Perce County Seat, was named after Meriwether Lewis. The Lewis-Clark valley as a whole is home to nearly 65,000 residents. With mild weather and minimal average precipitation, Lewiston offers year-round golf, hiking, water-skiing, sailing, jetboating, whitewater rafting, and world-class hunting, fishing, and camping. There are 10 state parks within 50 miles of the city, and Hells Canyon, the deepest river gorge in North America is nearby. Lewiston has been named the #1 town in America to live for an outdoorsman, as well as one of the safest small cities in the United States.

Lewiston is home to the Lewiston Independent School District, and four other districts are found within 20 miles. Lewis-Clark State College in downtown Lewiston boasts an annual enrollment of approximately 4,000 students and well-known programs in criminal justice, education, and nursing. LCSC recently built a new state-of-the-art Career & Technical Education (CTE) facility near the new Lewiston High School, which also has a new CTE center. Just 30 miles north of Lewiston in Moscow is the University of Idaho, and just across the state line from Moscow in Pullman is Washington State University. The area is also home to Walla Walla Community College. The colleges and universities in the Lewiston region provide an excellent opportunity for professional growth, training, continuing education and enrichment.



Throughout the year, the community celebrates its rich pioneer history with cultural and community festivals, including an annual Rodeo and parade. Beautiful downtown Lewiston organizes several other outdoor events each year, including Pumpkin Palooza, and Hot August Nights, a huge event including show-and-shine topped with rock and roll. The Valley celebrates Veterans Day, Christmas and the fair with parades each year, and the Holiday season brings out the amazing light display and hot chocolate at Locomotive Park, and the Snake River lighted boat parade. As well, Lewis-Clark State College puts on Art Under the Elms in conjunction with the Dogwood Festival. If you like baseball, LCSC is the host for the NAIA College World Series each year at the end of May.

THE PORT OF LEWISTON

Established in 1958, the Port of Lewiston is a local municipal corporation of the State of Idaho whose primary mission is to develop and manage assets and services that stimulate job creation and trade, while enhancing the quality of life for Nez Perce County residents. The Port has a three-member Port Commission serving as the Board of Commissioners. Each commissioner is elected to serve a six-year term and represents a district within Nez Perce County. The Port of Lewiston operates with 5 FTEs on a FY 2023 operating budget of \$3,559,404.

Located 465 miles from the Pacific Ocean, the Port of Lewiston is the most inland Port on the west coast. The Columbia-Snake River system is supported by inland barge service that transports bulk commodities. The Port of Lewiston provides the largest crane and warehouse facility on the inland river system. The Lewis-Clark Terminal, a privately-owned business adjacent to the Port, provides the largest grain storage facilities on the river system. As a multimodal and multi-dimensional municipality, the Port of Lewiston is engaged in the development of transportation and economic development projects that benefit local, regional and national stakeholders. Projects include transportation, fiber optic networks, and land development. The Port of Lewiston often partners with other economic development organizations and governmental entities as well.

To learn more about the various functions of the Port of Lewiston, please visit:

www.portoflewiston.com

THE POSITION

In 2016, the Port of Lewiston began constructing dark fiber optic infrastructure within the Port District to establish an open access telecommunications network for economic development purposes. To date, the Port has constructed approximately 50 miles of dark fiber optic infrastructure including redundant paths across the Southway and Memorial Bridges. The Port’s plan is a phased approach in constructing an open access dark fiber network within the City of Lewiston, Nez Perce County and beyond to provide a fiber optic highway that is accessible to all service providers on an equal basis. The open access infrastructure encourages free market access to all service providers desiring to offer competitive services.



Under the general direction of the General Manager, this position oversees the Port’s organizational processes, with an emphasis on the Port’s broadband and fiber optic expansion projects. Responsibilities include the strategic development of broadband network designs and working with subject matter experts and stakeholders to create impactful networks that will create business opportunities and quality of life improvements. The Broadband/Operations Manager will track the Port’s processes and make recommendations to the General Manager for improvements. This position will have primary oversight of Port projects, tracking budgetary and timeline compliance. As a key piece of the Port’s leadership team, this person will be expected to communicate both within the team and with others outside the Port in a professional, concise, and meaningful manner, providing input on strategic planning, budgeting, staffing, and all aspects of Port operations. This position will play a role in defining the Port’s positions on issues such as preservation of dams, broadband policy, Port growth, and organizational development.



The Broadband/Operations Manager must have high integrity, a long-term strategic perspective, a strong sense of accountability, and the ability to get things done with passion and good judgment. The ideal candidate will have a fair and thoughtful approach to management with flexibility and courage needed to shift direction and experiment with new initiatives, will possess excellent verbal and written communication skills, and have a high energy level and a sense of humor.

For a full job description and to understand the full scope of responsibilities of the position, please view the attachment found [here](#).

OPPORTUNITIES & CHALLENGES

Opportunities:

- Dark fiber system development in the region.
- Development of the cruise boat dock and confluence property.
- Possible future container business and transport of wind generation equipment.
- A possibility of eventual transition to General Manager.
- An abundance of diverse outdoor recreation opportunities available.

Challenges:

- On-going debate concerning salmon recovery and dam breaching.
- USACE dredging plans.
- Freight restrictions on Hwy. 12.
- Diversifying the Port’s revenue streams.

IDEAL CANDIDATE

Education and Experience:

Candidates must possess a bachelor’s degree or equivalent experience in an applicable field, and three (3) years of experience working with fiber networks, with a preference for experience designing and configuring optimal fiber networks. Five (5) years of progressively responsible work experience at a level that required supervision or management of projects and/or programs is also required. Experience with municipal government practices is a plus. The selected candidate must have possession of, or the ability to obtain, a valid driver’s license, and the ability to successfully pass a background check and drug test.

Necessary Knowledge, Skills and Abilities:

- Professional ability to communicate across all types, including advanced skills in writing, public speaking, listening, persuading, and facilitating.
- Exceptional skill as a program manager.
- A solid understanding of broadband and dark fiber terminology and acronyms.
- The ability to effectively negotiate with a variety of stakeholders to create positive outcomes for all parties involved.
- Experience in developing partnerships, building teams and resolving conflict.
- Must demonstrate a high level of intelligence and intellectual curiosity with a desire to explore new ideas and innovative approaches to solving complex problems.
- The ability to read, analyze and interpret complex documents.
- The ability to read, write and effectively communicate in person, over the telephone, virtually and electronically in small and large group settings.

- The ability to make effective speeches and presentations on Port related subjects whether complex and controversial or general subjects.
- The ability to define problems, collect data, establish facts and draw valid conclusions.
- Competent computer skills, including a working knowledge of the Microsoft Suite of Programs
- The ability to operate standard office equipment, to include a computer, cell phone, multiline phone system, streaming equipment, speakers, projectors, copier, and printers.
- A capability to represent the Port of Lewiston in a professional manner.
- Demonstrated initiative, imagination and creative ability for continued development of new and improved programs and the ability to take on challenges, address and solve unique and unusual problems. The ideal candidate is innovative and open to new concepts and ideas.
- Genuinely interested, engaged, and perceived as a positive contributor to the local community.
- Self-assurance and the skill to express ideas and concepts clearly and effectively.

COMPENSATION & BENEFITS

- **\$90,000 - \$110,000**
- Medical Health/Group Medical Insurance.
- Dental and Vision Insurance.
- Group Life Insurance.
- Public Employees Retirement System of Idaho. (PERSI)
- 8 Days of Administrative Leave per year.
- 15 Days of personal leave per year. Additional days negotiable.
- 12 Paid Holidays.
- Bereavement Leave.
- FMLA.
- Workers Compensation.

The Port of Lewiston is an Equal Opportunity Employer. All qualified candidates are strongly encouraged to apply by **August 7, 2022** (first review, open until filled). Applications, supplemental questions, resumes and cover letters will only be accepted electronically. To **apply online**, go to **www.prothman.com** and click on "Open Recruitments", select "**Port of Lewiston, ID – Broadband Manager / Operations Manager**", and click "**Apply Online**", or click [here](#). Resumes, cover letters and supplemental questions can be uploaded once you have logged in.



www.prothman.com

371 NE Gilman Blvd., Suite 310
 Issaquah, WA 98027
 206.368.0050